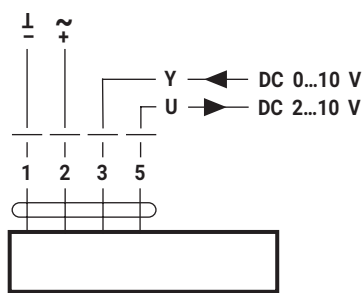
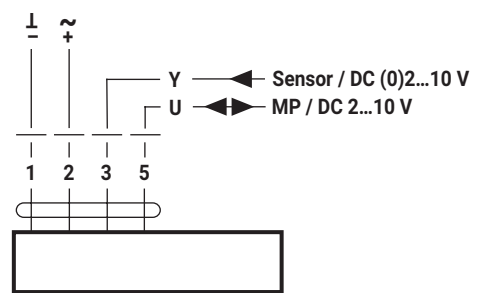


AC 24 V
DC 24 V

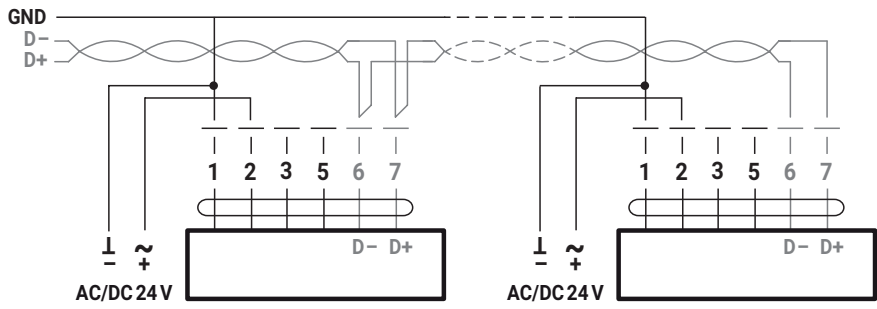


SH24A-MF..



SH24A-MP..

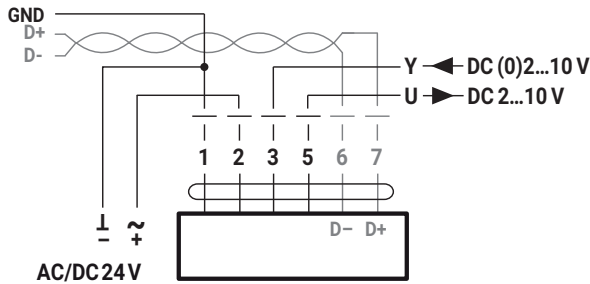
BACnet MS/TP / Modbus RTU



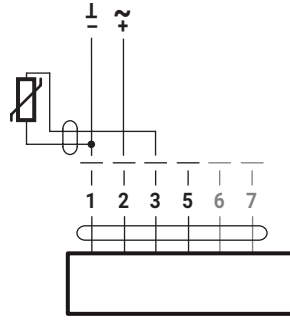
SH24A-MOD..

SH24A-MOD..

BACnet MS/TP / Modbus RTU / analog

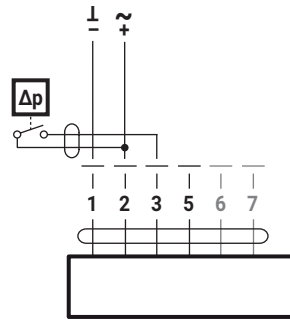


SH24A-MOD..

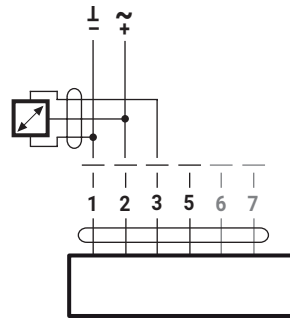
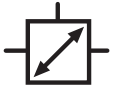


Ni1000	-28...+98°C	850...1600 Ω ²⁾
PT1000	-35...+155°C	850...1600 Ω ²⁾
NTC	-10...+160°C ¹⁾	200 Ω...60 kΩ ²⁾

..MOD



..MOD



..MOD